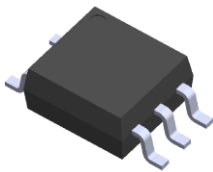


5 PIN SOP HIGH SPEED 1Mbit/s TRANSISTOR PHOTOCOUPLER ELM453H-G Series

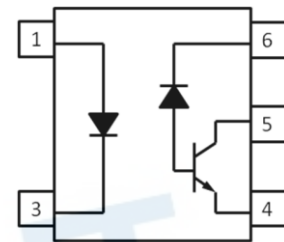
Preliminary



Features

- Compliance Halogen Free.
(Br <900 ppm ,Cl <900 ppm , Br+Cl < 1500 ppm)
- Compliance with EU REACH
- Pb free and RoHS compliant.
- Guaranteed performance from -40 to 125°C
- High isolation voltage between input and output
(Viso=3750 V rms)
- UL and cUL approved(No. E214129)
- VDE approved (No. 40028116)
- SEMKO approved
- NEMKO approved
- DEMKO approved
- FIMKO approved
- CQC approved

Schematic



Pin Configuration

- 1: Anode
- 3: Cathode
- 4: GND
- 5: V_{out}
- 6: V_{CC}

Description

The ELM453H devices each consist of an infrared emitting diode, optically coupled to a high speed photo detector transistor. A separate connection for the photodiode bias and output-transistor collector increase the speed by several orders of magnitude over conventional phototransistor couplers by reducing the base-collector capacitance of the input transistor. The devices are packaged in industry standard 5pin SOP packages and are suitable for surface mounting.

Applications

- Line receivers
- Field bus communication and control.
- Power transistor isolation in motor drives
- Replacement for low speed phototransistor photo couplers
- High speed logic ground isolation
- Analog signal ground isolation

Absolute Maximum Ratings (T_A=25 °C)

| | Parameter | Symbol | Rating | Unit |
|-------------------------------------|-------------------|------------------|------------|------------------|
| Input | Forward current | I _F | 25 | mA |
| | Reverse voltage | V _R | 5 | V |
| | Power dissipation | P _D | 45 | mW |
| Output | Power dissipation | P _C | 85 | mW |
| | Output current | I _O | 8 | mA |
| | Output voltage | V _O | 20 | V |
| | Supply voltage | V _{CC} | 30 | V |
| Output Power Dissipation | | P _O | 85 | mW |
| Isolation Voltage* ¹ | | V _{ISO} | 3750 | V _{rms} |
| Operating Temperature | | T _{OPR} | -40 ~ +125 | °C |
| Storage Temperature | | T _{STG} | -55 ~ +125 | °C |
| Soldering Temperature* ² | | T _{SOL} | 260 | °C |

Notes:

*1 AC for 1 minute, R.H.= 40 ~ 60% R.H. In this test, pins 1 & 3 are shorted together, and pins 4, 5 & 6 are shorted together.

*2 For 10 seconds

Electrical Characteristics

Input

| Parameter | Symbol | Min. | Typ. | Max. | Unit | Condition |
|-------------------|----------|------|------|------|---------------|---------------------------|
| Forward voltage | V_F | - | 1.4 | 1.8 | V | $I_F = 16\text{mA}$ |
| Reverse Current | I_R | - | - | 10 | μA | $V_R = 5\text{V}$ |
| Input capacitance | C_{IN} | - | 70 | - | pF | $V_F=0$, $f=1\text{MHz}$ |

Output

| Parameter | Symbol | Min | Typ. | Max. | Unit | Condition |
|---------------------------|-----------|-----|------|------|---------------|---|
| High Level Output Current | I_{OH} | - | 0.05 | 5 | μA | $I_F=0\text{mA}$, $V_O=V_{CC}=15\text{V}$, $T_A=25^\circ\text{C}$ |
| | | - | - | 50 | | $I_F=0\text{mA}$, $V_O=V_{CC}=15\text{V}$, $T_A=70^\circ\text{C}$ |
| High level supply current | I_{CCH} | - | 0.5 | 2 | μA | $I_F=0\text{mA}$, $V_{CC}=15\text{V}$ |

Transfer Characteristics

| Parameter | Symbol | Min | Typ. | Max. | Unit | Condition |
|--------------------------|----------|-----|------|------|------|--|
| Low Level Output Current | V_{OL} | - | - | 0.4 | V | $I_F=16\text{mA}$, $I_O=3\text{mA}$, $V_{CC}=4.5\text{V}$ |
| Current Transfer Ratio | CTR | 20 | - | - | % | $I_F=16\text{mA}$, $V_O=0.4\text{V}$, $V_{CC}=4.5\text{V}$ |

Switching Characteristics (TA=0 to 70°C unless specified otherwise)

| Parameter | Symbol | Min | Typ. | Max. | Unit | Condition |
|--|-----------|-----|------|------|-------------------------|--|
| Propagation Delay Time to Logic Low | T_{PHL} | - | 0.35 | 1.0 | μs | $I_F=16\text{mA}$, $R_L=1.9\text{K}\Omega$ |
| Propagation Delay Time to Logic High | T_{PLH} | - | 0.45 | 1.0 | μs | $I_F=16\text{mA}$, $R_L=1.9\text{K}\Omega$ |
| Common Mode Transient Immunity at Logic High*3 | CM_H | 10 | | | $\text{KV}/\mu\text{S}$ | $I_F = 0\text{mA}$, $V_{CM}=1500\text{Vp-p}$, $R_L=1.9\text{K}\Omega$, $T_A = 25^\circ\text{C}$ |
| Common Mode Transient Immunity at Logic Low*3 | CM_L | 10 | | | $\text{KV}/\mu\text{S}$ | $I_F=16\text{mA}$, $V_{CM}=1500\text{Vp-p}$, $R_L=1.9\text{K}\Omega$, $T_A=25^\circ\text{C}$ |

*All typical at $T_A = 25^\circ\text{C}$

Typical Electro-Optical Characteristics Curves

Figure 1. Forward Current vs Forward Voltage

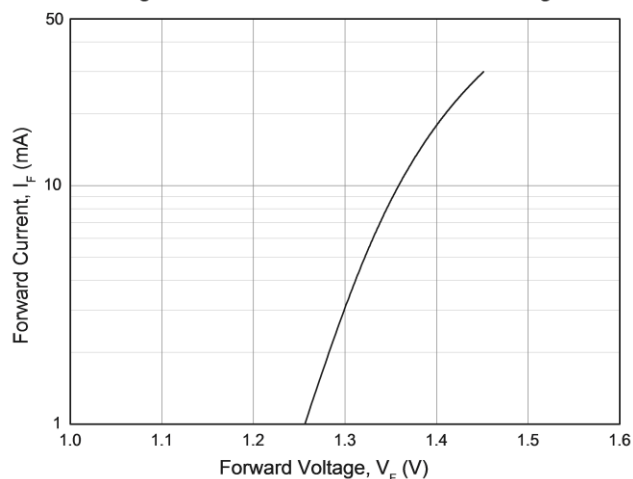


Figure 2. Current Transfer Ratio vs Forward Current

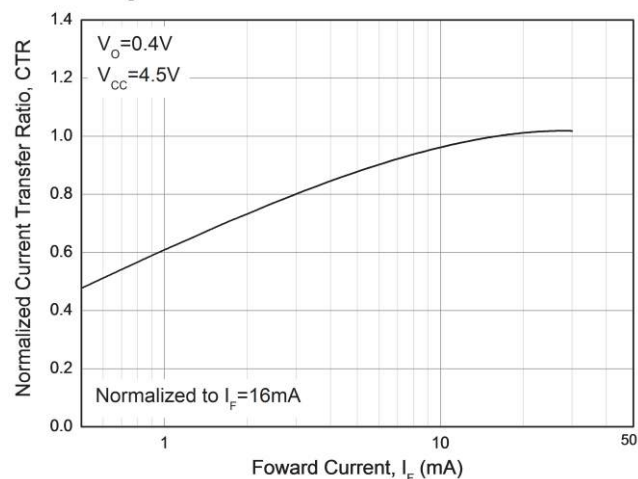


Figure 3. Current Transfer Ratio vs Ambient Temperature

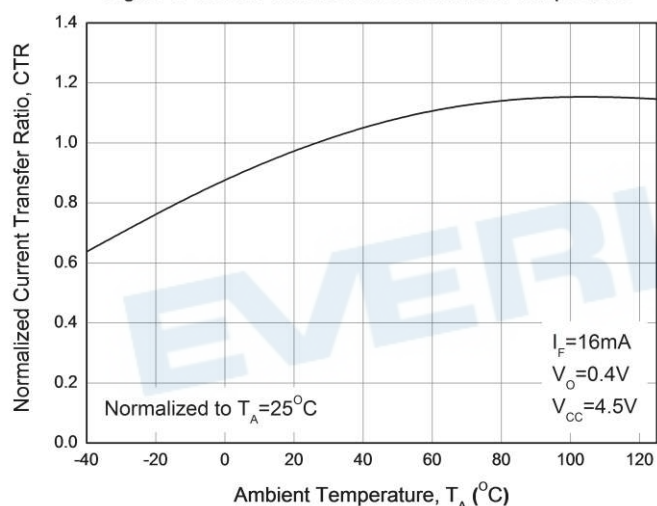


Figure 4. Output Current vs Output Voltage

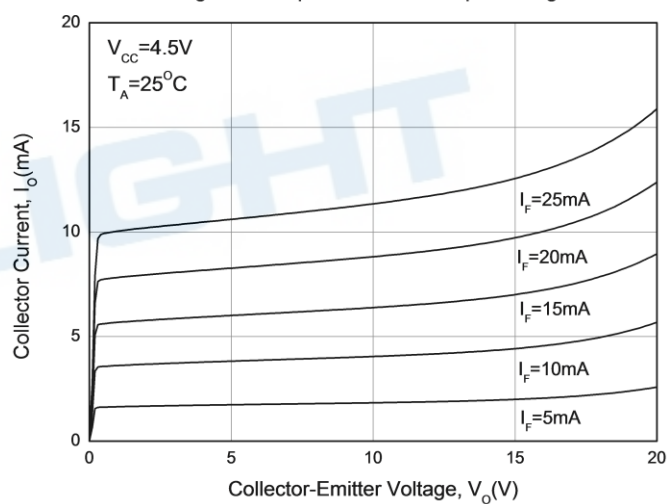


Figure 5. High Level Output Current vs Ambient Temperature

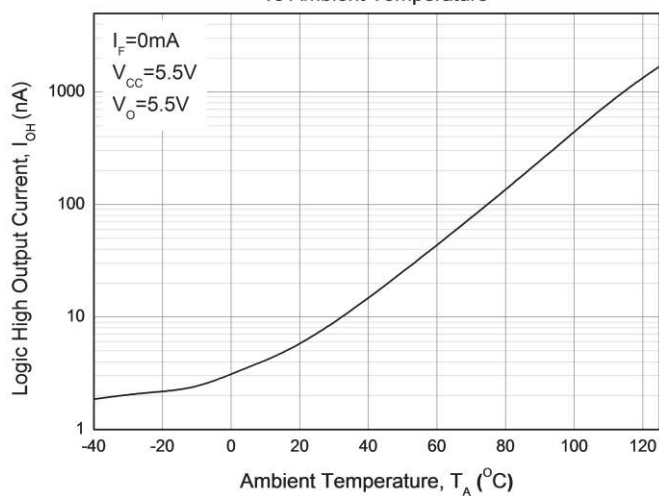


Figure 6. Propagation Delay vs. Load Resistance

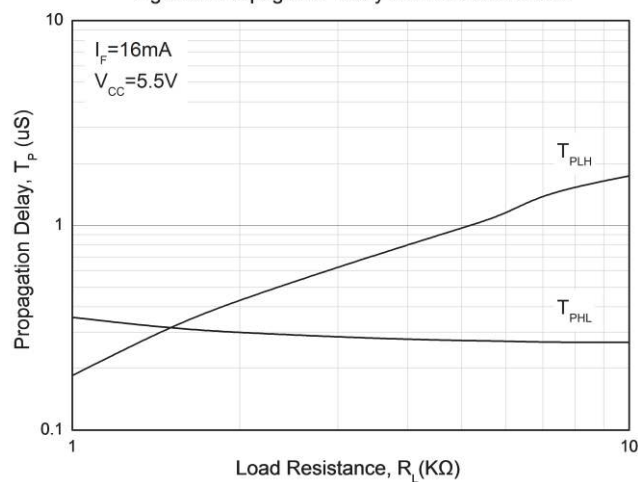


Figure 7. Propagation Delay vs. Temperature

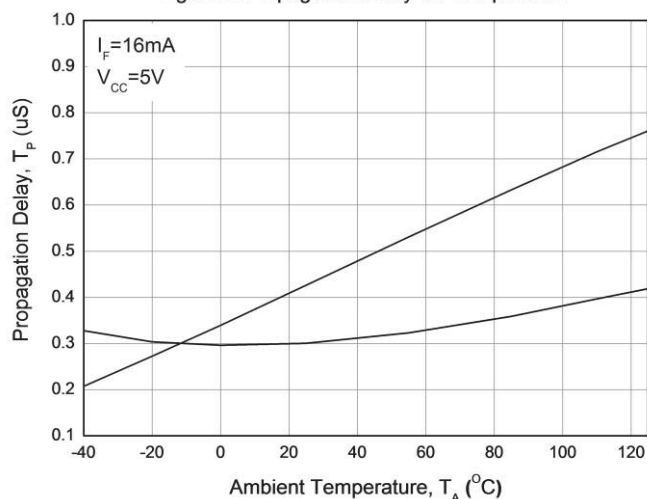


Fig. 8 Switching Time Test circuit

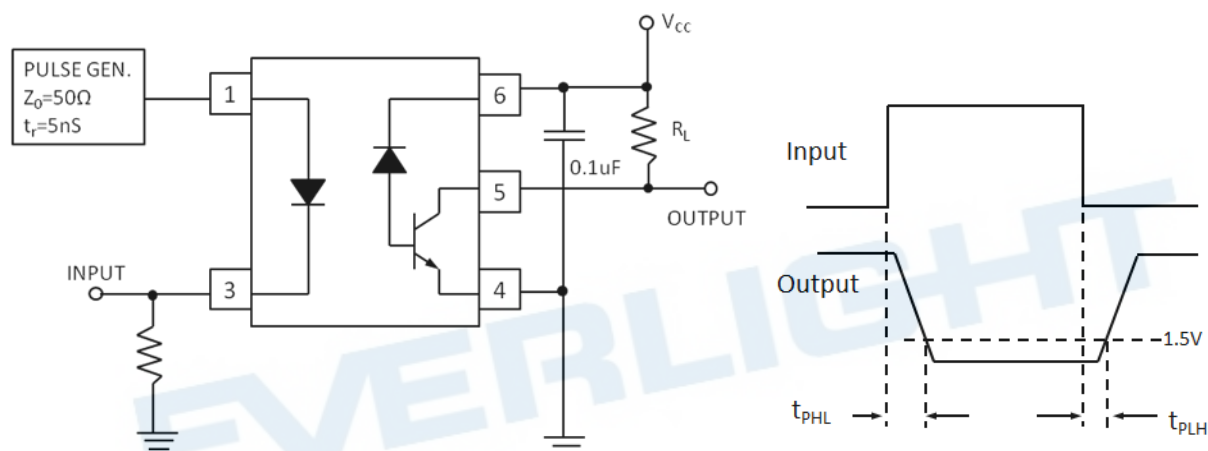
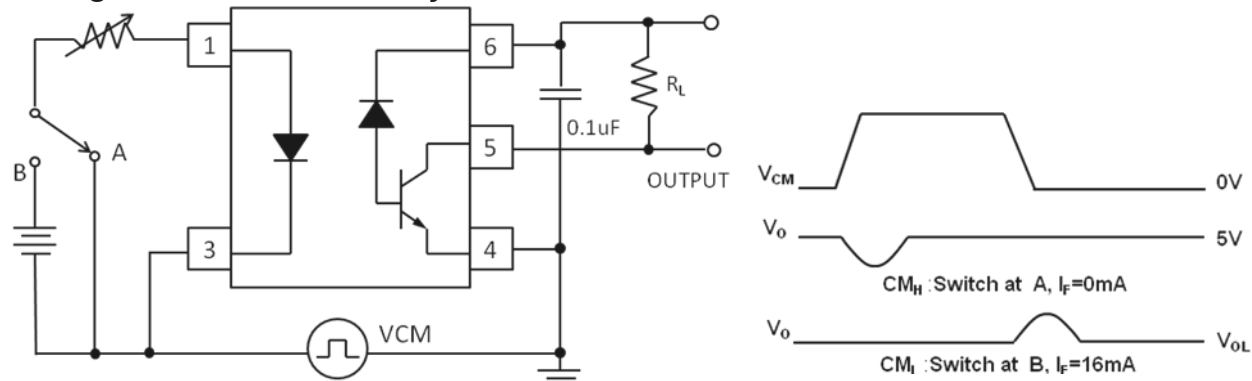


Fig. 9 Transient Immunity Test circuit



Note:

*3 Common mode transient immunity in logic high level is the maximum tolerable (positive) dV_{CM}/dt on the leading edge of the common mode pulse signal V_{CM} , to assure that the output will remain in a logic high state (i.e., $V_O > 2.0\text{V}$).

Common mode transient immunity in logic low level is the maximum tolerable (negative) dV_{CM}/dt on the trailing edge of the common mode pulse signal, V_{CM} , to assure that the output will remain in a logic low state (i.e., $V_O < 0.8\text{V}$)

Order Information

Part Number

ELM453H(Z)-VG

Note

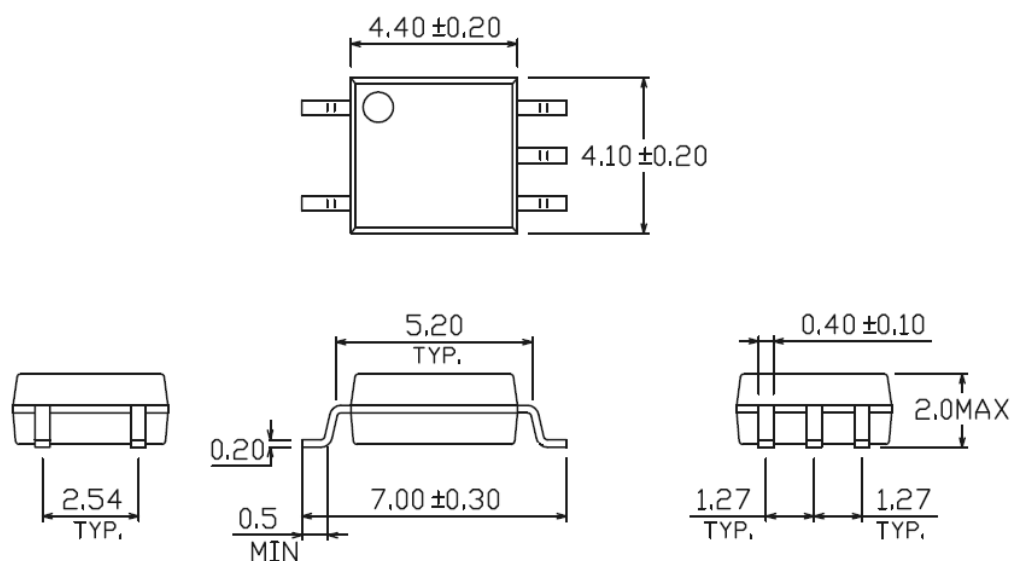
- Z = Tape and reel option (TA, TB or none)
- V = VDE (optional)
- G = Halogens free

| Option | Description | Packing quantity |
|--------|---|---------------------|
| None | Standard SMD option | 100 units per tube |
| (TA) | Surface mount lead form + TA tape & reel option | 3000 units per reel |
| (TB) | Surface mount lead form + TB tape & reel option | 3000 units per reel |

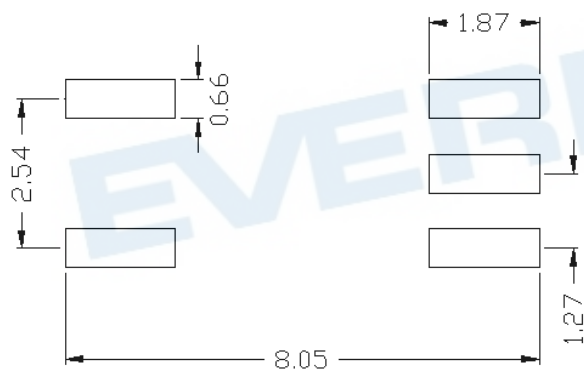
EVERLIGHT

Package Dimension

(Dimensions in mm)



Recommended pad layout for surface mount leadform



Notes

Suggested pad dimension is just for reference only.
Please modify the pad dimension based on individual need.

Device Marking

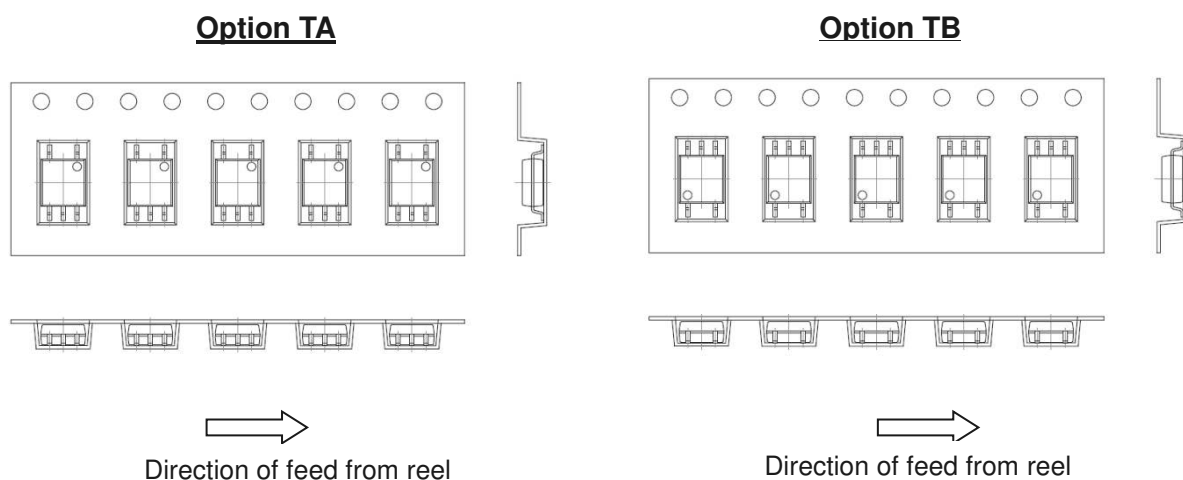


Notes

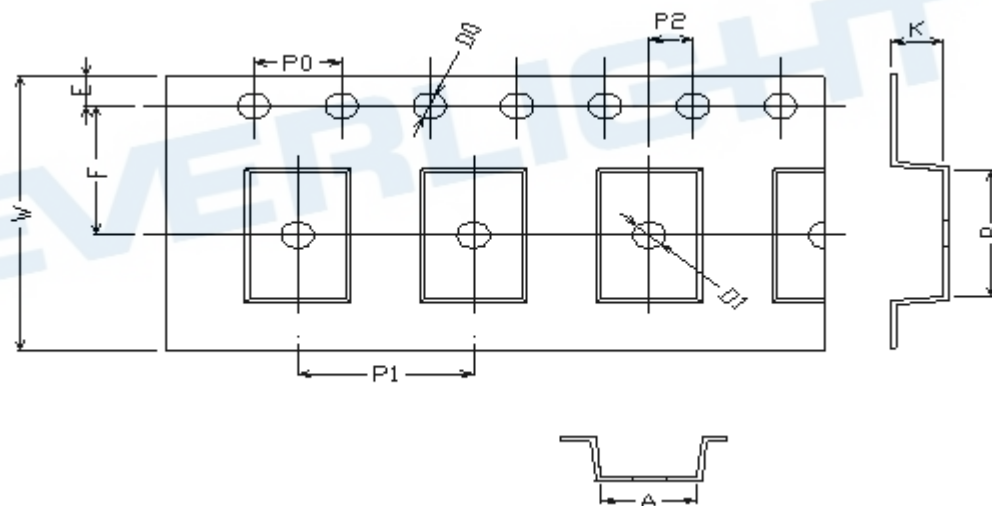
| | |
|-------|---------------------------|
| EL | denotes EVERLIGHT |
| M453H | denotes Device Number |
| Y | denotes 1 digit Year code |
| WW | denotes 2 digit Week code |
| V | denotes VDE (optional) |

EVERLIGHT

Tape & Reel Packing Specifications



Tape dimensions

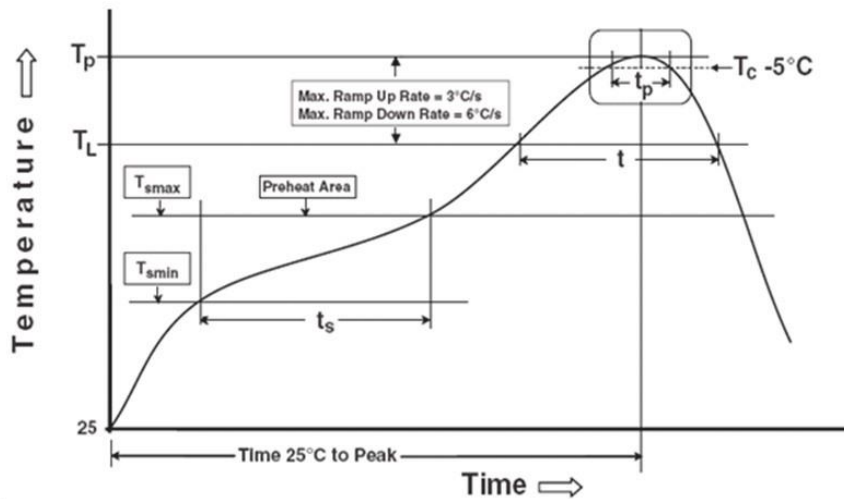


| Dimension No. | A | B | Do | D1 | E | F |
|----------------|----------------|---------------|---------------|----------------|----------------|---------------|
| Dimension (mm) | 4.4 ± 0.1 | 7.4 ± 0.1 | 1.5 ± 0.1 | 1.5 ± 0.1 | 1.75 ± 0.1 | 7.5 ± 0.1 |
| Dimension No. | Po | P1 | P2 | t | W | K |
| Dimension (mm) | 4.0 ± 0.15 | 8.0 ± 0.1 | 2.0 ± 0.1 | 0.25 ± 0.1 | 16.0 ± 0.2 | 2.4 ± 0.1 |

Precautions for Use

1. Soldering Condition

1.1 (A) Maximum Body Case Temperature Profile for evaluation of Reflow Profile



Note:

Reference: IPC/JEDEC J-STD-020D

Preheat

| | |
|--|-----------------|
| Temperature min (T_{smin}) | 150 °C |
| Temperature max (T_{smax}) | 200°C |
| Time (T_{smin} to T_{smax}) (t_s) | 60-120 seconds |
| Average ramp-up rate (T_{smax} to T_P) | 3 °C/second max |

Other

| | |
|--|------------------|
| Liquidus Temperature (T_L) | 217 °C |
| Time above Liquidus Temperature (t_L) | 60-100 sec |
| Peak Temperature (T_P) | 260°C |
| Time within 5 °C of Actual Peak Temperature: $T_P - 5^\circ\text{C}$ | 30 s |
| Ramp- Down Rate from Peak Temperature | 6°C /second max. |
| Time 25°C to peak temperature | 8 minutes max. |
| Reflow times | 3 times |

DISCLAIMER

1. Above specification may be changed without notice. EVERLIGHT will reserve authority on material change for above specification.
2. The graphs shown in this datasheet are representing typical data only and do not show guaranteed values.
3. When using this product, please observe the absolute maximum ratings and the instructions for use outlined in these specification sheets. EVERLIGHT assumes no responsibility for any damage resulting from use of the product which does not comply with the absolute maximum ratings and the instructions included in these specification sheets.
4. These specification sheets include materials protected under copyright of EVERLIGHT. Reproduction in any form is prohibited without the specific consent of EVERLIGHT.
5. This product is not intended to be used for military, aircraft, automotive, medical, life sustaining or life saving applications or any other application which can result in human injury or death. Please contact authorized Everlight sales agent for special application request.
6. Statements regarding the suitability of products for certain types of applications are based on Everlight's knowledge of typical requirements that are often placed on Everlight products in generic applications. Such statements are not binding statements about the suitability of products for a particular application. It is the customer's responsibility to validate that a particular product with the properties described in the product specification is suitable for use in a particular application. Parameters provided in datasheets and/or specifications may vary in different applications and performance may vary over time. All operating parameters, including typical parameters, must be validated for each customer application by the customer's technical experts. Product specifications do not expand or otherwise modify Everlight's terms and conditions of purchase, including but not limited to the warranty expressed therein.